



Fishers Lane, London, W4 1YA

Guide Price £350,000

**WHITMAN & CO.**

SALES · LETTINGS · COMMERCIAL

- RETIREMENT FLAT
- Direct garden access
- Fantastic location
- Ground floor apartment
- Residents lounge and gardens
- No onward chain

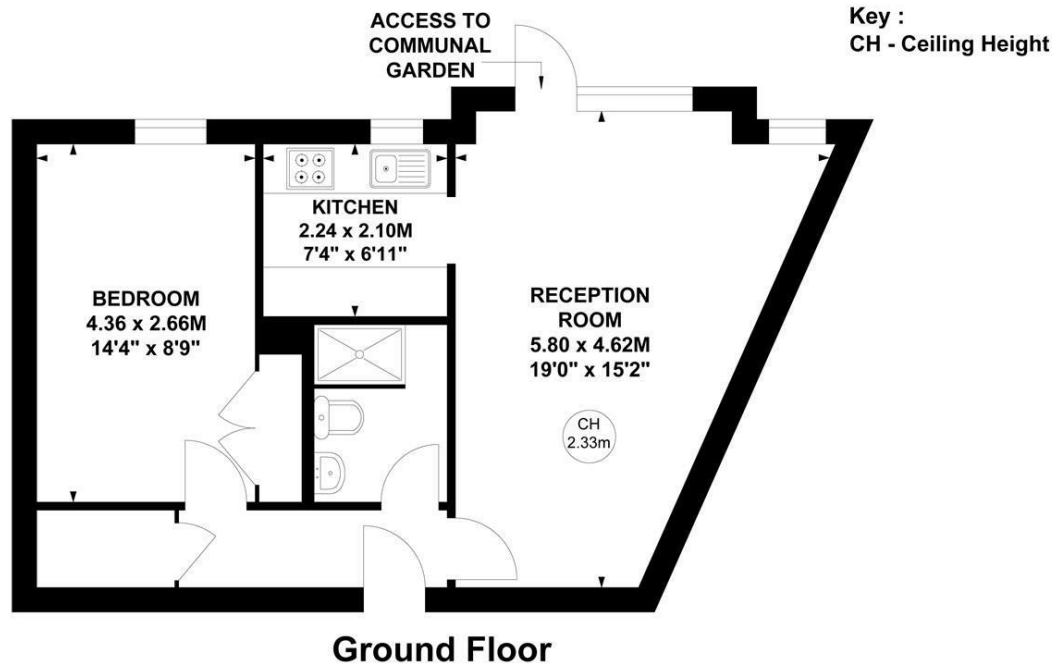
Tenure - Leasehold  
 Lease length - 100 Years remaining  
 Ground Rent - £511 pa  
 Service Charge - £3000 pa  
 Local authority - Hounslow  
 Council tax - Band D

## THE PROPERTY

RETIREMENT FLAT - A newly-renovated, bigger than average, ground floor apartment with direct access to communal gardens located in this sought-after retirement complex in the centre of Chiswick close to shops and transport. The accommodation comprises a spacious 19'x15'2" reception room, a fully fitted kitchen, a recently fitted bathroom with a walk-in shower, a 14'4x8'9" double bedroom with a fitted wardrobe, and an entrance hall with storage cupboard. Communal facilities include a large resident's lounge, private gardens, laundry room, lift access, residents off street parking, house manager and emergency response cover. Homecross House is located just north of Chiswick High Road offering close proximity to shops, cafes, restaurants, parks, two tube stations and numerous bus routes. No onward chain.

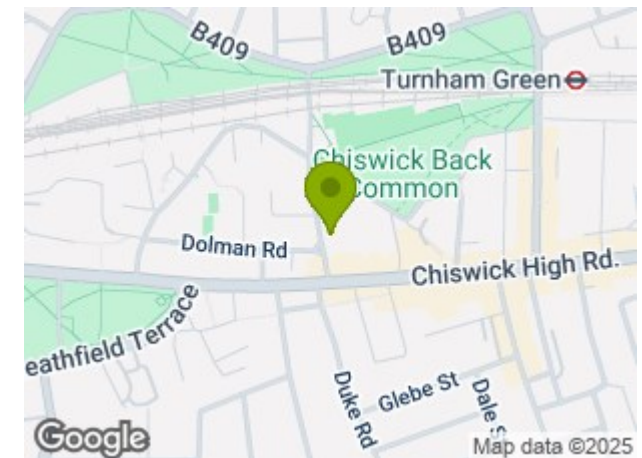
## Homecross House, W4

Approximate Gross Internal Area  
 47.31 sq m / 509 sq ft



Not to scale, for guidance only and must not be relied upon as a statement of fact.  
 All measurements and areas are approximate only

## SITUATION



5-7 Turnham Green Terrace, Chiswick, London, W4 1RG

Tel 020 8747 8800

E-mail [sales@whitmanandco.com](mailto:sales@whitmanandco.com)

Website [www.whitmanandco.com](http://www.whitmanandco.com)



MISREPRESENTATION ACT 1967

Whitman & Co. for themselves and for the vendors give notice that these particulars do not constitute any part of, an offer of contract. All statements contained in these particulars are made without responsibility on the part of Whitman & Co. or the vendor. None of the statements contained in these particulars is to be relied upon as statements or representations of facts. Any intending purchaser must satisfy himself by inspection or otherwise as to the correctness of each of the statements contained in these particulars. The vendor does not make or give, and neither Whitman & Co. or any person in their employment has any authority to make or give, any representation or warranty whatever in relation to the property.